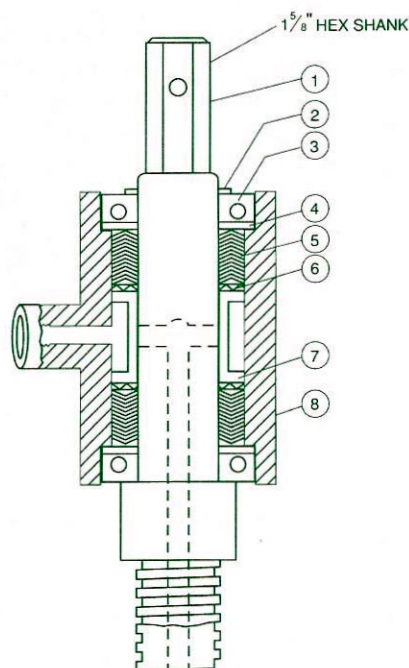


## Water Swivels (continued)



1 in. SIDE FEED WATER SWIVEL

### Water Swivels

PENNDRILL's light duty 1" side feed water swivel is a perfect tool for your auger type drill. This swivel was designed with the driller in mind. Hole after hole of trouble-free operations

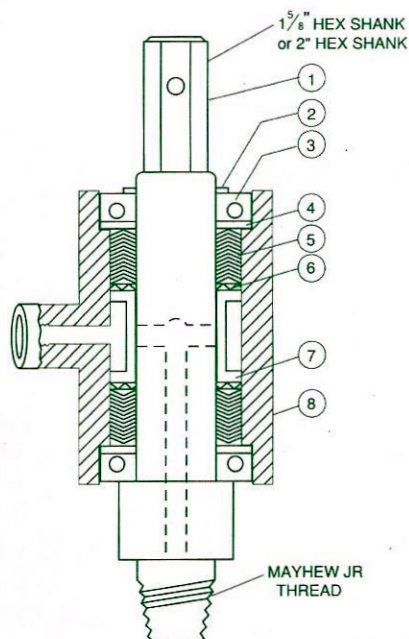
are designed into this and every PENNDRILL swivel. Rugged yet simple construction allows a complete rebuilding job to be done in the field in a minimum amount of time.

#### Assembly

CONN.	PART NO.
A	G-404
AW	G-401
AWJ	G-408
BW	G-409
BWJ	G-410
N-3	G-405
N-4	G-402
NW	G-403
NWJ	G-407
2 3/8 API Reg	G-411

#### Replacement Parts

FIG NO.	DESCRIPTION	PART NO.
1	Spindle-A	G-513
1	Spindle AW	G-510
1	Spindle AWJ	G-517
1	Spindle BW	G-518
1	Spindle BWJ	G-519
1	Spindle N-3	G-514
1	Spindle N-4	G-511
1	Spindle NW	G-512
1	Spindle NWJ	G-516
1	Spindle 2 3/8 Reg	G-520
2	Snap Ring	G-501
3	Bearing	G-502
4	Bearing Ring	G-508
5	Packing	G-503
6	Wave Spring	G-504
7	Spacer	G-505
8	Housing	G-507
9	Threadolet	G-509
10	Grease Fitting	G-506



1 1/2 in. SIDE FEED WATER SWIVEL

PENNDRILL's heavy duty 1 1/2 side feed water swivel could be the answer to your problem, if you are running an auger type drill but can't locate a water swivel with the proper flow capacity. This swivel has an 1 1/2 water course throughout. Call PENNDRILL today to discuss the hex and rod connection you need.

#### Assembly

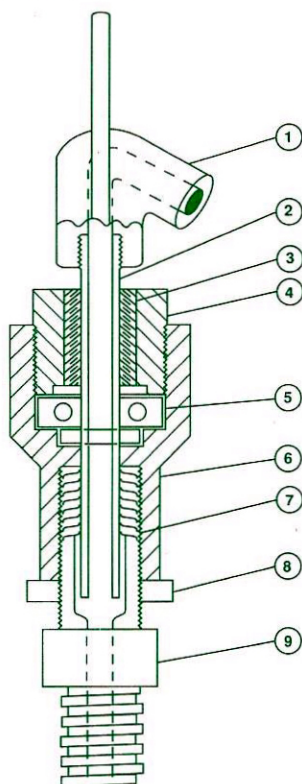
CONN.	PART NO.
1 5/8 Hex-2 3/8 MJR	G-701
2 Hex-2 3/8 MJR	G-721

#### Replacement Parts

FIG NO.	DESCRIPTION	PART NO.
1	Spindle-1 5/8	G-702
1	Spindle-2	G-720
2	Retaining Nut	G-703
3	Bearing	G-704
4	Washer	G-705
5	Packing	G-706
6	Spring	G-707
7	Spacer	G-708
8	Body	G-709
9	Threadolet	G-710
10	Grease Fitting	G-506



# Water Swivels



## Water Swivels

PENNDRILL's light duty Bail type water swivel will be on your drill rig for years to come. We have been building them for nearly 40 years. All PENNDRILL water swivels are field

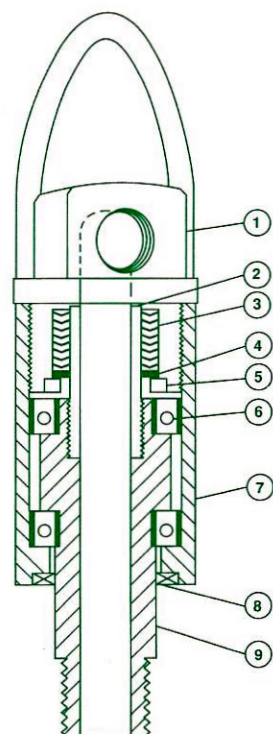
serviceable without the need for special tools which all drillers appreciate. They are most commonly used with AW and NW drill rods and they deliver the volume of water needed.

### Assembly

CONN.	PART NO.
A	G-101
AW	G-102
B	G-103
BW	G-104
N-3	G-105
N-4	G-106
NW	G-107
AQ	G-108
BQ	G-109
NQ	G-110
1 1/4 L.H.	G-111
AWJ	G-112
BWJ	G-114
NWJ	G-113

### Replacement Parts

FIG NO.	DESCRIPTION	PART NO.
1	Bail	G-201
2	Spindle	G-202
3	B.N.Bushing	G-203
4	Bearing Nut	G-204
5	Bearing	G-205
6	Body	G-206
7	Packing	G-208
8	L.H.Nut	G-209
9	AW Conn.	G-211
9	AWJ Conn.	G-221
9	N-4 Conn.	G-215
9	NW Conn.	G-216
9	NWJ Conn.	G-222
9	NQ Conn.	G-219



PENNDRILL's 1 1/2" heavy duty Bail type water swivel is your answer to water volume problems. The swivel has an 1 1/2" water course throughout, which supplies the volume needed. The pulling capacity of the swivel is

rated at 10,000 lbs. Lets you go deeper and still have the water needed to keep the hole clean. Chrome plating on the inside of the body will keep your swivel new for years.

### Assembly

CONN.	PART NO.
NW	G-600
2 3/8 MJR	G-601
2 3/8 API Reg	G-602
2 7/8 API Reg	G-603
NWJ	G-604
2 3/8 API IF	G-605
2 7/8 API IF	G-606
W/O	G-301

### Replacement Parts

FIG NO.	DESCRIPTION	PART NO.
1	Upper Body	G-302
2	Wash Tube	G-303
3	Packing	G-208
4	Washer	G-320
5	Snap Ring	G-306
6	Bearing	G-307
7	Lower Body	G-308
8	Seal	G-309
9	Spindle	G-310
10	NW Conn.	G-317
11	2 3/8 MJR Conn.	G-316
12	2 3/8 API Conn.	G-315