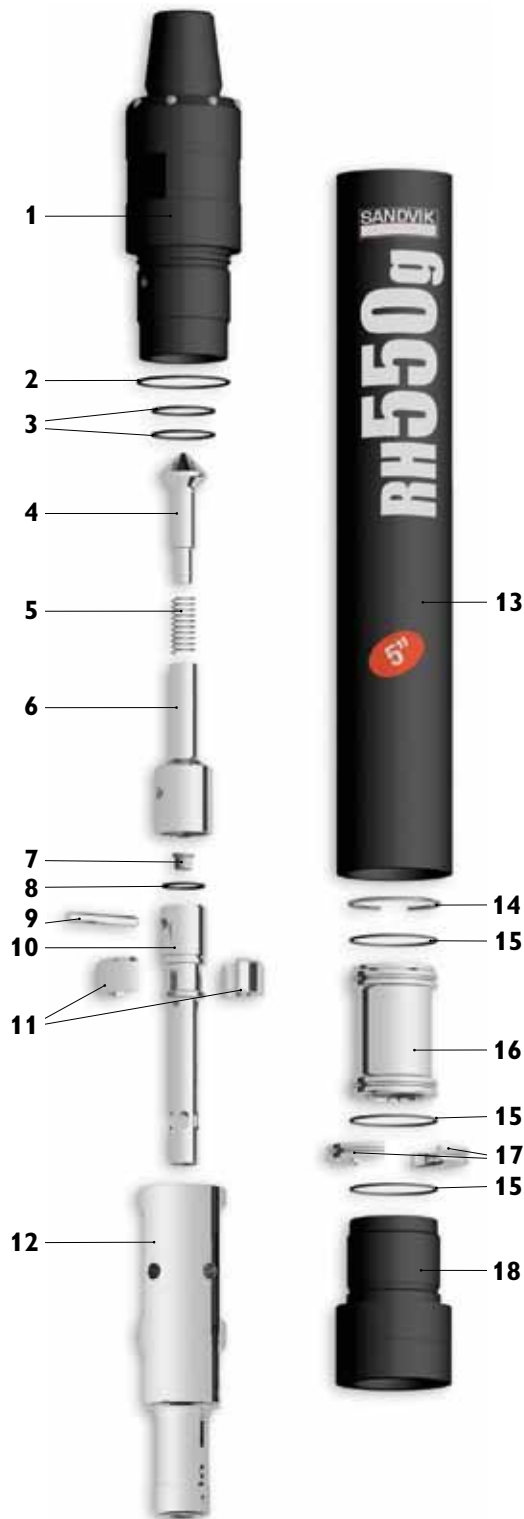



# Sandvik DTH drilling tools

## RH550g hammer

# 5"



| Replacement parts      | Item description                            |                             | Weight |       | Part No.  |
|------------------------|---|-----------------------------|--------|-------|---|
|                        | kg  | lb                          | kg     | lb    |   |
| 1.                     | Top Subs with 3 O-Rings                     |                             |        |       |   |
|                        | 3   | 1/2" API Reg. Pin           | 18     | 39,6  | 33-58D02/04CA   |
|                        | 2   | 7/8" API Reg. Pin           | 18     | 39,6  | 33-58D02/11CA   |
|                        |   | #24 Cubex. Pin              | 18     | 39,6  | 33-58D02/77CA   |
| 2.                     | O-Ring Top Sub OD (1)                       |                             |        |       | In Seal Kit   |
| 3.                     | O-Ring Top Sub ID (2)                       |                             |        |       | In Seal Kit   |
| 4.                     | Check Valve Dart (with spring)              |                             | 0,3    | 0,66  | 25-99002A   |
| 5.                     | Check Valve Spring                          |                             | 0,02   | 0,04  | 22-99072  |
| 6.                     | Check Valve Guide                           |                             | 0,3    | 0,66  | 39-58S01  |
| 7.                     | Choke Set, Blank 1/8", 3/16", & 1/4"        |                             | 0,12   | 0,26  | 29-68017A   |
| 8.                     | O-Ring Feed Tube (1)                        |                             |        |       | In Seal Kit   |
| 9.                     | Feed Tube Retainer Pin                      |                             | 0,09   | 0,20  | 12-99018  |
| 10.                    | Feed Tube With Retainer Pin and Blank Choke |                             | 1      | 2,20  | 37-58001A   |
| 11.                    | Tuning Ring for low volume (optional)       |                             | 0,03   | 0,07  | 56-58552  |
| 12.                    | Piston                                      |                             | 12     | 26,40 | 36-58J81  |
| 13.                    | Piston Case with Retainer Ring              |                             | 29     | 63,8  | 35-58D07A   |
| 14.                    | Piston Retainer Ring                        |                             | 0,05   | 0,11  | 23-99032  |
| 15.                    | O-Rings Guide Sleeve & Bit Ret. (3)         |                             |        |       | In Seal Kit   |
| 16.                    | Guide Sleeve with 2 O-Rings (Item 14)       |                             | 3      | 6,60  | 26-58J10A   |
| 17.                    | Bit Retainer Ring w/O-Ring (Item 14)        |                             | 0,5    | 1,10  | 27-58006A   |
| 18.                    | Driver Sub                                  |                             | 7      | 15,4  | 34-58D70  |
| <b>Seal Kit</b>        |   |                             |        |       |   |
| 1                      | piece of 2, 2 of 3, 1 of 7 & 7 of 15        |                             | 0,45   | 0,99  | 38-58D56  |
| <b>Rebuild Kit</b>     |   |                             |        |       |   |
| 1                      | piece of 1, 1 of 13, 1 of 18 & Seal Kit     |                             |        |       |   |
|                        | 3   | 1/2" API Reg. Pin           | 54     | 118,8 | 38-58D02/04C  |
|                        | 2   | 7/8" API Reg. Pin           | 54     | 118,8 | 38-58D02/11C  |
|                        |   | #24 Cubex. Pin              | 54     | 118,8 | 38-58D02/77C  |
| <b>Complete Hammer</b> |   |                             |        |       |   |
|                        |   | 3 1/2" API Reg. Pin top sub |        |       | 32-5555-GMA/04C   |
|                        |   | 2 7/8" API Reg. Pin top sub |        |       | 32-5555-GMA/11C   |
|                        |   | #24 Cubex. Pin top sub      |        |       | 32-5555-GMA/77C   |
| <b>Bit shank</b>       |   |                             |        |       |   |
|                        | M50   |                             |        |       |  |

|                          | Weight  |         | Outside diameter |        | Hammer length |                         | Hammer length with bit |      |              |      |
|--------------------------|---------|---------|------------------|--------|---------------|-------------------------|------------------------|------|--------------|------|
|                          | kg      | lb      | mm               | inch   | mm            | inch                    | Bit closed             |      | Bit extended |      |
|                          | 73      | 160     | 126              | 4,96   | 987           | 38,86                   | 1082                   | 42,6 | 1122         | 44,2 |
| Air consumption, cfm     |         |         |                  |        |               | Air consumption, m3/min |                        |      |              |      |
|                          | 150 psi | 250 psi | 350 psi          | 10 bar | 18 bar        | 24 bar                  |                        |      |              |      |
|                          | 305     | 580     | 855              | 8,64   | 16,42         | 24,21                   |                        |      |              |      |
| <b>Low Volume Option</b> | 285     | 540     | 790              | 8,07   | 15,25         | 22,37                   |                        |      |              |      |