

# Mincon XP80-QL80

## Why Buy the Mincon XP80-QL80?

The Mincon XP80-QL80 is a hammer designed specifically for exploration. An improved air flow design allows for better utilization of large volumes of air employed in deep hole exploration. Built on the field proven technology of the Mincon MP80, the XP80-QL80 delivers superior penetration rates versus other manufacturers while offering the benefits of a far more robust multi splined bit.

Like all Mincon DTH hammers, the Mincon XP80-QL80 maintains excellent operating pressure over an extended service life and overall is the tool you require to get the maximum out of all your equipment.

Mincon Products are all manufactured in house, and all processes are carried out under the one roof. This guarantees that the quality you “Expect” is always delivered.

## Design Highlights:

- ▶ Design allows for more efficient air flow of large volumes of air used in deep drilling.
- ▶ Internal Aligner ensures bit to piston concentricity.
- ▶ Multiple splined shank reduces possibility of shankage.
- ▶ Unique manufacturing processes extend internal components life allowing for multiple rebuilds in abrasive conditions.
- ▶ Valveless operation to maximize energy output, provide efficient air utilization and reduce service requirements.
- ▶ Extra air-flow system allows for better hole cleaning in troublesome holes.
- ▶ Reversible hardened wear sleeve for optimum wear resistance even in the most abrasive conditions.
- ▶ Multi-start threads on backhead and chuck ensure easy coupling/uncoupling of hammer.
- ▶ Unique internal mount system gives positive make-up and eliminates the need for wear shims and special assembly tools.
- ▶ All critical internal components are heat treated under strict control to maximize tool longevity.
- ▶ An overall cost-effective and user friendly tool for use in the most demanding conditions.

**Mincon XP80-QL80**

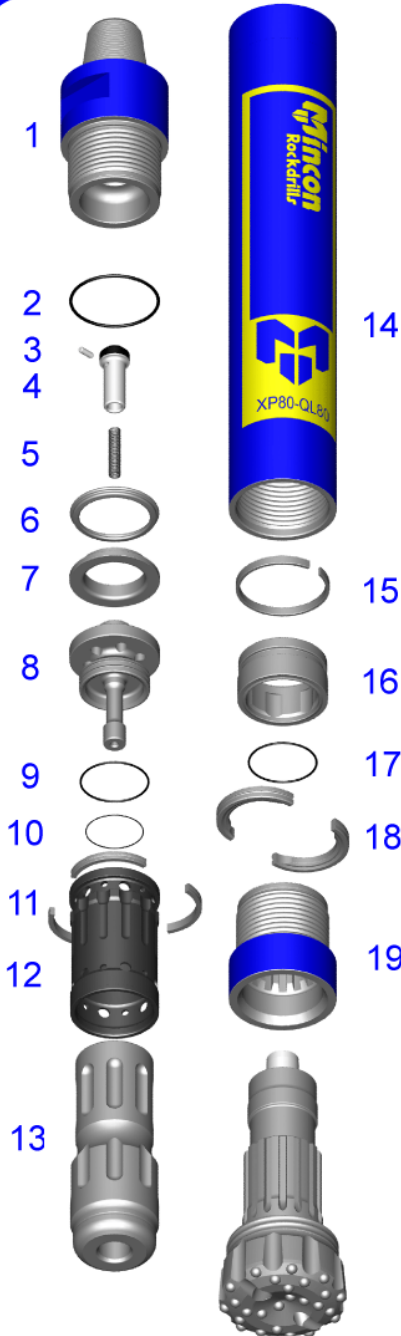
### Applications:

- Shallow Oil & Gas
- Exploration

***‘The Driller’s Choice’***

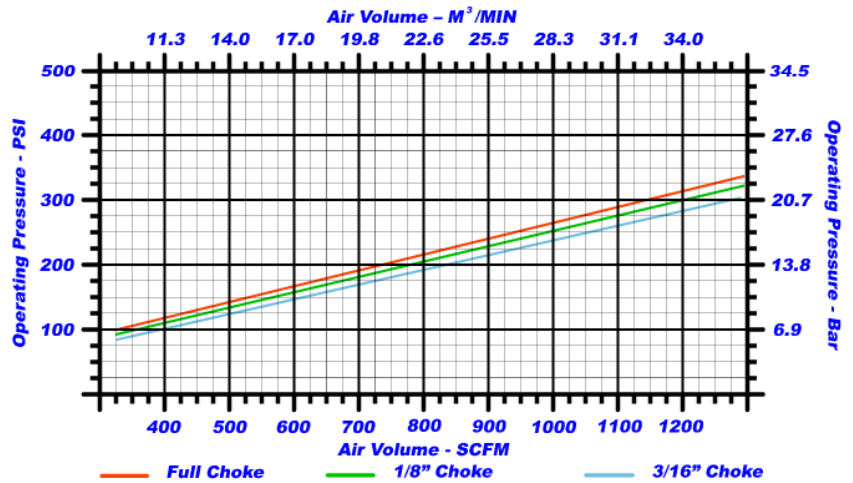
***“LEADERS IN THE FIELD OF DRILLING TECHNOLOGY”***

# MINCON XP80-QL80 PARTS LIST & SPECIFICATION



Item	Description	Part No.
	Mincon XP80-QL80 Hammer	MD801AS07
1	Backhead	MD801BH01
2	O Ring	MD822OR01
3	Choke Blank	MD806CH01
	Choke 1/8" (3.2mm)	MD806CH02
	Choke 3/16" (4.8mm)	MD806CH03
4	Check Valve	MD802CV01
5	Spring	MB503SP01
6	Lock Ring	MD805LR01
7	Steel Make Up Ring	MD804SM01
8	Air Distributor	MD807DR02
9	O Ring	MD821OR01
10	O Ring	MD820OR01
11	Seating Ring	MD809SR01
12	Inner Cylinder	MD808IC02
13	Piston	MD810PN02
14	Wear Sleeve	MD811WS01
15	Piston Retaining Ring	MD812PR02
16	Aligner	MD813BB01
17	O Ring	MD821OR01
18	Bit Retaining Ring	MD814BR02
19	Chuck	MD815CK02
Outside Diameter		7.15" / 181.1mm
Minimum Bit Size		8.5" / 216mm
Spanner Flat Size		5.5" / 140mm
Length (Less Bit, Backhead Shoulder to Chuck)		47.4" / 1205mm
Bit Shank Type		QL80
Backhead Thread		4 1/2" A.P.I. Reg. Pin
Piston Weight		86 Lbs / 39.1 Kgs
Wear Sleeve Discard Limit		6.650" / 168.9mm

## OPERATING PRESSURE / AIR CONSUMPTION



## Mincon International Ltd

Shannon, Co. Clare  
Ireland

Telephone: +353 61 361 099

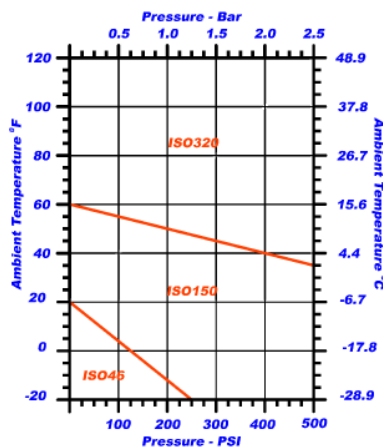
Fax: +353 61 361 808

Email: [mincon@mincon.com](mailto:mincon@mincon.com)

Web: <http://www.mincon.com>

Distributed by:

## ROCKDRILL OIL GRADE



## ROCKDRILL OIL CONSUMPTION

