

Mincon XP120-SD12

Why Buy the Mincon XP120-SD12?

The Mincon XP120-SD12 is proving itself the best hammer on the market in all kinds of demanding drilling conditions. Through unique manufacturing processes, the life of the internal components is prolonged allowing for multiple rebuilds of the hammer in abrasive conditions.

Like all Mincon DTH hammers, the Mincon XP120-SD12 maintains excellent operating pressure over an extended service life and overall is the tool you require to get the maximum out of all your equipment.

Mincon Products are all manufactured in house, and all processes are carried out under the one roof. This guarantees that the quality you “Expect” is always delivered.

Design Highlights:

- ▶ Patented features maximize energy output and reduce service requirements.
- ▶ Unique manufacturing processes extend internal components life allowing for multiple rebuilds in abrasive conditions.
- ▶ Valveless operation to maximize energy output, provide efficient air utilization and reduce service requirements.
- ▶ Extra air-flow system allows for better hole cleaning in troublesome holes.
- ▶ Reversible hardened wear sleeve for optimum wear resistance even in the most abrasive conditions.
- ▶ Multi-start threads on backhead and chuck ensure easy coupling/uncoupling of hammer.
- ▶ Unique internal mount system gives positive make-up and eliminates the need for wear shims and special assembly tools.
- ▶ All critical internal components are heat treated under strict control to maximize tool longevity.
- ▶ An overall cost-effective and user friendly tool for use in the most demanding conditions.



Mincon XP120-SD12

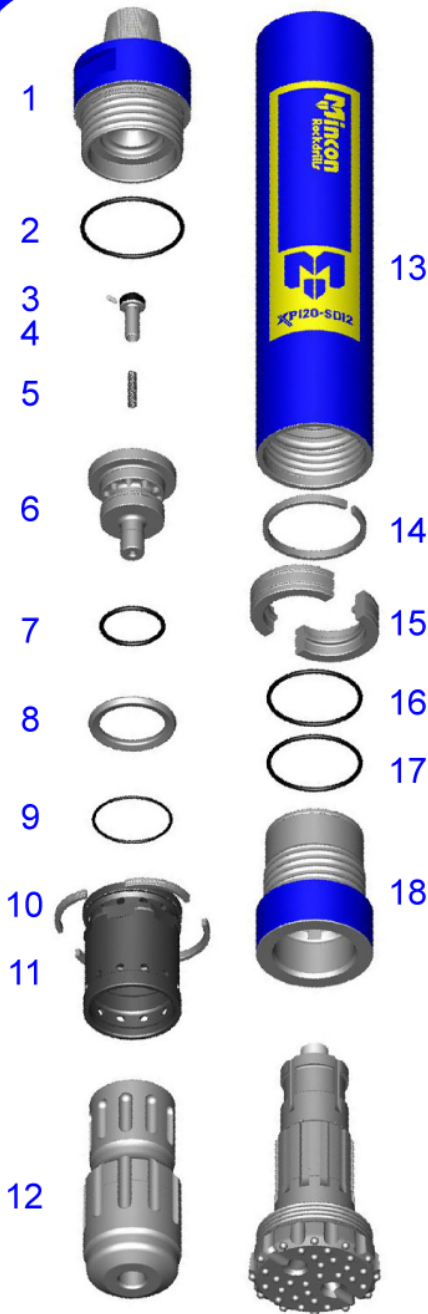
Applications:

- Oil & Gas
- Construction
- Waterwell
- Blasthole

‘The Driller’s Choice’

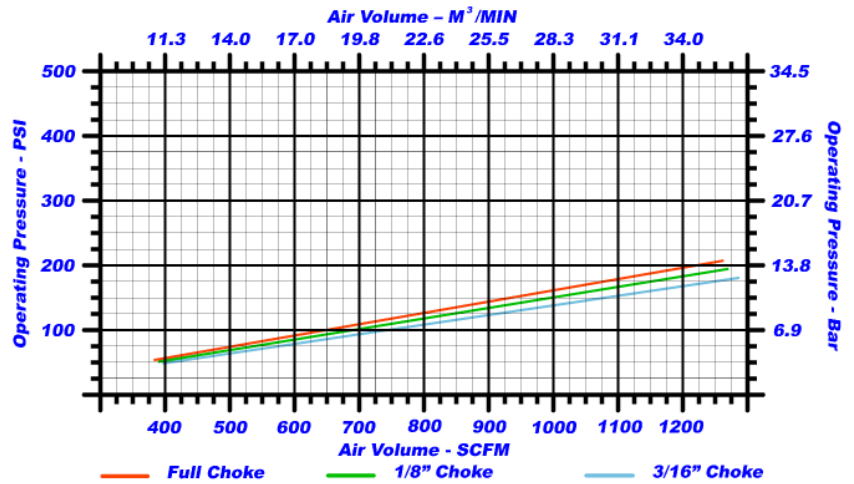
“LEADERS IN THE FIELD OF DRILLING TECHNOLOGY”

MINCON XP120-SD12 PARTS LIST & SPECIFICATION



Item	Description	Part No.
	Mincon XP120-SD12 Hammer	MD1201AS01
1	Backhead	MD1201BH01
2	O Ring	MD1220OR01
3	Choke Blank	MB506CH01
	Choke 1/8" (3.2mm)	MB506CH02
	Choke 3/16" (4.8mm)	MB506CH03
4	Check Valve	MD1202CV01
5	Spring	MD1203SP01
6	Air Distributor	MD1207DR01
7	O Ring	MD1221OR01
8	Lock Ring	MD1205LR01
9	O Ring	MD1222OR01
10	Seating Ring	MD1209SR01
11	Inner Cylinder	MD1208IC01
12	Piston	MD1210PN01
13	Wear Sleeve	MD1211WS01
14	Piston Retaining Ring	MD1212PR01
15	Bit Retaining Ring	MD1214BR01
16	O Ring	MD1223OR01
17	O Ring	MD1223OR01
18	Chuck	MD1215CK01
Outside Diameter		10.75" 273mm
Minimum Bit Size		12" 305mm
Spanner Flat Size		9.5" 240mm
Length (Less Bit, Backhead Shoulder to Chuck)		56.6" 1437mm
Bit Shank Type		SD12
Backhead Thread		6-5/8" A.P.I. Reg. Pin
Piston Weight		266 Lbs 121 Kgs
Wear Sleeve Discard Limit		10.051" 255.3mm

OPERATING PRESSURE / AIR CONSUMPTION



Mincon International Ltd

Shannon, Co. Clare

Ireland

Telephone: +353 61 361 099

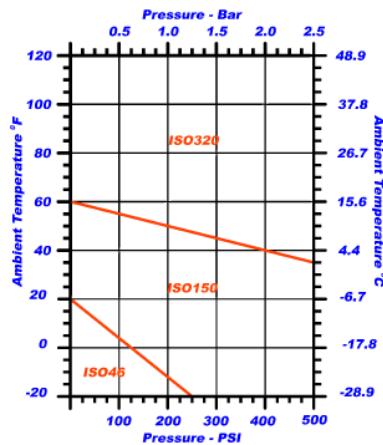
Fax: +353 61 361 808

Email: mincon@mincon.com

Web: <http://www.mincon.com>

Distributed by:

ROCKDRILL OIL GRADE



ROCKDRILL OIL CONSUMPTION

