

# Mincon 6DHSD6

## Why Buy the Mincon 6DHSD6?

The Mincon 6DHSD6 has proven itself the best hammer on the market in all kinds of demanding conditions and applications. The Mincon 6DHSD6 delivers superior penetration rates versus other manufacturers with extremely smooth drilling.

Like all Mincon DTH hammers, the Mincon 6DHSD6 maintains excellent operating pressure over an extended service life and overall is the tool you require to get the maximum out of all your equipment.

Mincon Products are all manufactured in house, and all processes are carried out under the one roof. This guarantees that the quality you “Expect” is always delivered.

## Design Highlights:

- ▶ Design allows for increased penetration against large volumes of water, and also allows for the introduction of more water in unstable conditions.
- ▶ Unique manufacturing processes extend internal components life allowing for multiple rebuilds in abrasive conditions.
- ▶ Valveless operation to maximize energy output, provide efficient air utilization and reduce service requirements.
- ▶ Extra air-flow system allows for better hole cleaning in troublesome holes.
- ▶ Reversible hardened wear sleeve for optimum wear resistance even in the most abrasive conditions.
- ▶ Multi-start threads on backhead and chuck ensure easy coupling/uncoupling of hammer.
- ▶ Unique internal mount system gives positive make-up and eliminates the need for wear shims and special assembly tools.
- ▶ All critical internal components are heat treated under strict control to maximize tool longevity.
- ▶ An overall cost-effective and user friendly tool for use in the most demanding conditions.



# Mincon 6DHSD6

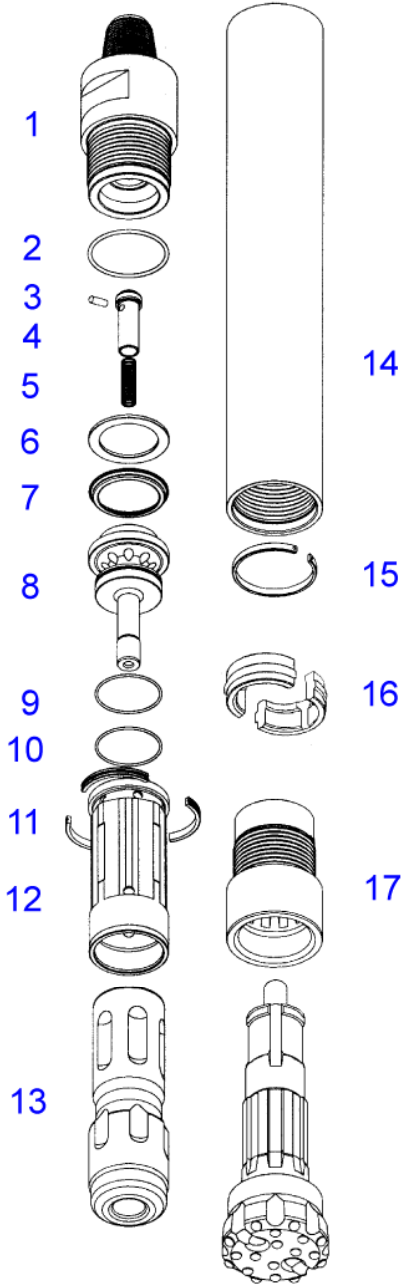
### Applications:

- Water Well
- Exploration
- Construction

***‘The Driller’s Choice’***

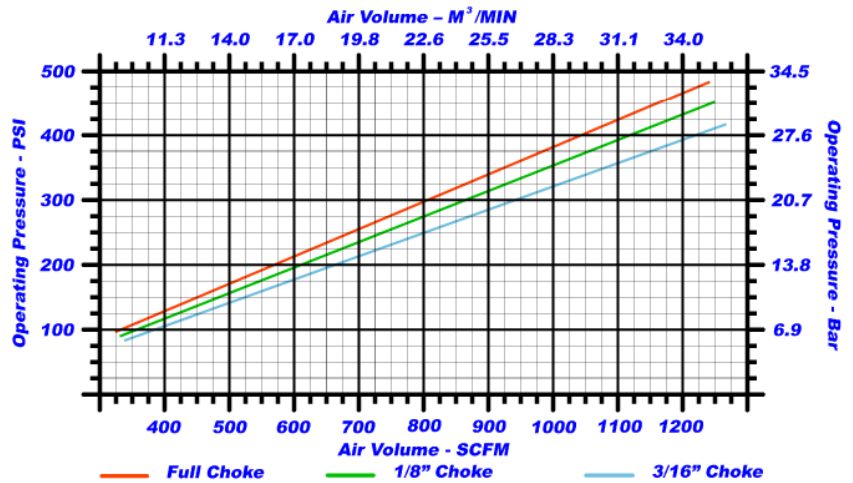
***“LEADERS IN THE FIELD OF DRILLING TECHNOLOGY”***

# MINCON 6DHSD6 PARTS LIST & SPECIFICATION



Item	Description	Part No.
	Mincon 6DHSD6 Hammer	MD601AS06
1	Backhead	MD601BH01
2	O Ring	MD622OR01
3	Choke Blank	MB506CH01
	Choke 1/8" (3.2mm)	MB506CH02
	Choke 3/16" (4.8mm)	MB506CH03
4	Check Valve	MB502CV01
5	Spring	MB503SP01
6	Steel Make Up Ring	MD604SM01
7	Lock Ring	MD605LR01
8	Air Distributor	MD607DR01
9	O Ring	MD621OR01
10	O Ring	MD620OR01
11	Seating Ring	MD609SR01
12	Inner Cylinder	MD608IC01
13	Piston	MD610PN03
14	Wear Sleeve	MD611WS01
15	Piston Retaining Ring	MD612PR01
16	Bit Retaining Ring	MD614BR02
17	Chuck	MD615CK03
Outside Diameter		5.5"
Minimum Bit Size		6"
Spanner Flat Size		4"
Length (Less Bit, Backhead Shoulder to Chuck)		42.7"
Bit Shank Type		SD6 (5315)
Backhead Thread		3 1/2" A.P.I. Reg. Pin
Piston Weight		44 Lbs / 20 Kgs
Wear Sleeve Discard Limit		5.060" / 128.5mm

## OPERATING PRESSURE / AIR CONSUMPTION



## Mincon International Ltd

Shannon, Co. Clare

Ireland

Telephone: +353 61 361 099

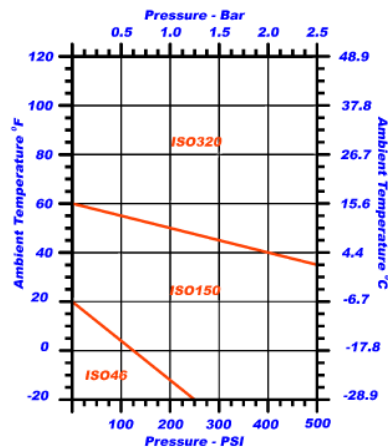
Fax: +353 61 361 808

Email: [mincon@mincon.com](mailto:mincon@mincon.com)

Web: <http://www.mincon.com>

**Distributed by:**

## ROCKDRILL OIL GRADE



## ROCKDRILL OIL CONSUMPTION

