

8"

DOMINATOR 800 LE

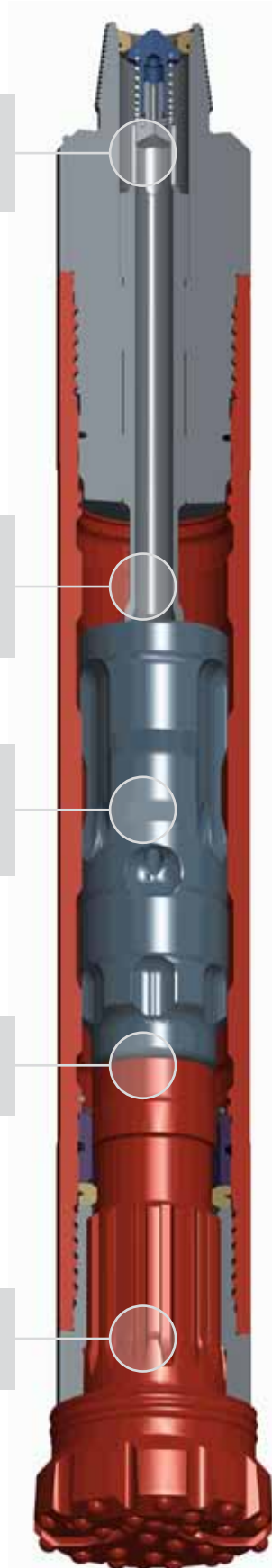
One piece Top Adaptor reduces internal parts. No make up required. External NRV for easy servicing

Drive chamber capacities and air cycle tuned for efficient drilling of soft un-consolidated ground conditions

Optimised piston porting for improved air flow and high frequency operation

Reversible outer cylinder for extended service life

16 spline QL80 shank for maximum strength and durability



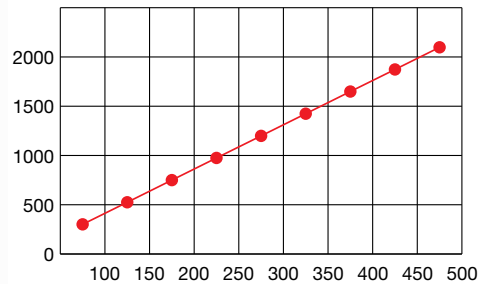
The Dominator 800 LE has been designed for high performance drilling in blast hole application in quarries and mines. Its operating characteristics are particularly suited to soft and un-consolidated ground conditions.

The single piece Top Adaptor/ Air distributor improves reliability and is easy to service. The outer cylinder is hardened for maximum durability and can be reversed to increase service life.

Suitable for operation at air pressures of 100 - 435 psi (7 - 30 bar).

Air Consumption

Dominator 800 LE Air Consumption

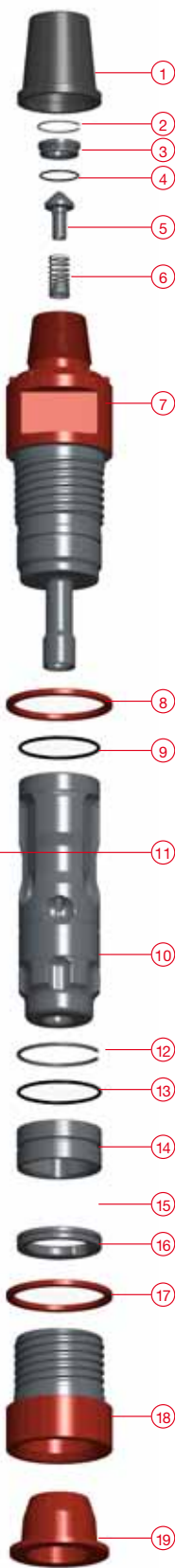


—●— Theoretical Air Consumption

Available Shanks

IR QL 80

Hammer Overview



Hammer Type	Dominator 800 LE
Part Number	600396
Shank	Ingersoll Rand QL 80
Top Thread	4.1/2" Api Reg Pin
Flat Hammer Size	127mm (5")
Weight	178 Kg
Outside Diameter	182mm (7.165")
Make Up Length	1244mm (48.976")
Recommended Minimum Thrust	800 Kg (1760 Lbs)
Recommended Maximum Thrust	2000 Kg (4400 Lbs)

Parts List

Hammer Type	Shank	Dominator 800 LE		
		QL80	SK	RK
Model Number		600396	Contents	
Item	Description	Part Number	Quantities	
1	Thread Protector	207295		
2	Snap Ring	783034		
3	N.R.V. Seat	602887		
4	O' Ring	768150		
5	Non Return Valve	602285		
6	N.R.V. Spring	760117		
7	Top Adaptor	604510		
8	Spacer	603576		
9	O' Ring	768145		
10	Piston	604505		
11	Cylinder	604506		
12	Snap Ring	783033		
13	O' Ring	768151		
14	Bit Guide Bush	604511		
15	O' Ring	768102		
16	Bit Retaining Ring	604512		
17	Chuck Spacer	603576		
18	Chuck	604507		
19	End Cap	741027		

Drill Bits

Part Number	Diameter		Face Design	Type	Buttons Qty	Over Weight Size (Kg)
	mm	Inch				
Ingersoll Rand Shank - QL 80						
653062	222	8.3/4	Concave	Domed	14 x 18mm / 10 x 18mm Long	56.8
653239	254	10	Concave	Domed	34x18mm / 12x13mm Retracks	64
653254	270	10.5/8	Concave	Domed	42x18mm / 12x13mm Retracks	69.5
653263	270	10.5/8	Concave	Parabolic	42x18mm / 12x13mm Retracks	69.5

Halco Rock Tools
Quality Management System
is Certified to ISO9001: 2008
Certificate No: LRQ 0850659



West lane, Southowram, Halifax, HX3 9TW

Tel: + 44 (0) 1422 399900, Fax: + 44 (0) 1422 330186

Email: salesuk@halcorocktools.com • salesusa@halcorocktools.com • salesaus@halcorocktools.com

halcorocktools.com