

8"

DOMINATOR 800

One piece top-adaptor reduces internal parts. No make up required. External N.R.V. for easy maintenance.

Revised chamber volumes and cycle timing to optimize performance.

Simplified piston geometry for improved balance and location within the cylinder,

Halco Mach 80, IR DHD380 and A63-SD8 shank reduces contact stresses and wear rates.



The Dominator 800 is a general purpose hammer suitable for a wide range of air pressures. The Dominator 800 is a low to mid range air volume hammer. The one piece top-adaptor with N.R.V. (Non-Return-Valve) makes it easy to maintain and service the hammer. The Dominator 800 unique's air distributor finger is integral with the top-adaptor and reduces requirements for shiming. The Dominator 800 has no liner which increases the piston blow energy and reduces parts required. This hammer is suitable for use with overburden systems.

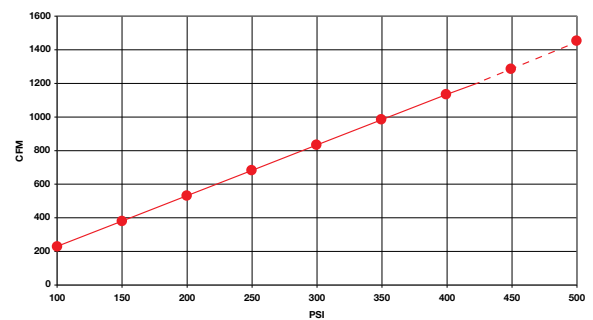
Dominator 800 is available in three different shank types (see below).

Suitable for operation at air pressures of 100 - 435 psi (7 - 30 bar).

Drilling diameters of 200 - 311mm (7 7/8 - 14 1/4").

Air Consumption

Dominator 800 Air Consumption

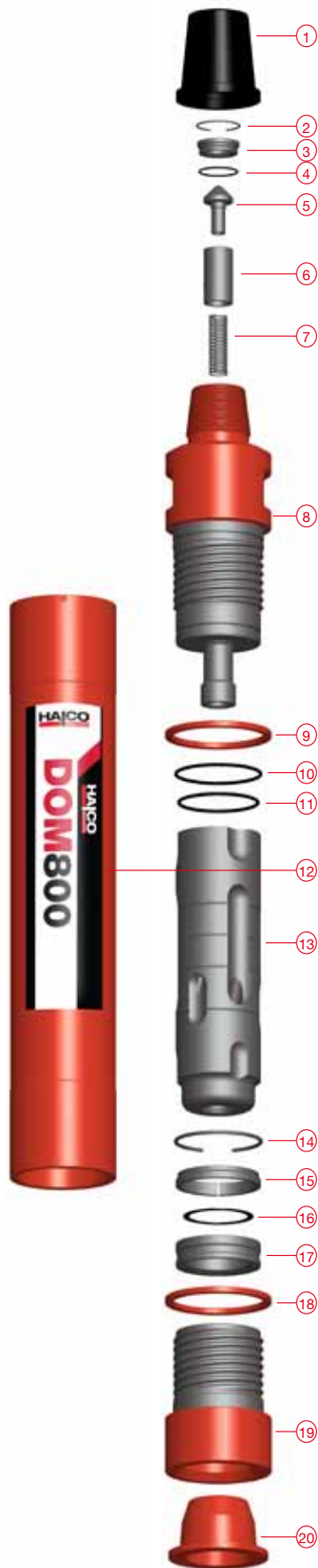


Available Shanks

Halco Mach 80

IR DHD 380

Sandvik Mission A63-15/SD8



Hammer Overview

Hammer Type	Dominator 800		
Part Number	600310	600308	600309
Shank	Halco	Sandvik Mission	Ingersoll Rand
	Mach 80	A63-15/SD8	DHD 380
Top Thread	4. 1/2" Api Reg Pin	4. 1/2" Api Reg Pin	4. 1/2" Api Reg Pin
Flat Hammer Size	156mm (6.142")	156mm (6.142")	156mm (6.142")
Weight	175 Kg	180 Kg	181 Kg
Outside Diameter	182mm (7.165")	182mm (7.165")	182mm (7.165")
Make Up Length	1180mm (46.456")	1180mm (46.456")	1180mm (46.456")
Recommended Minimum Thrust	800kg (1760 Lbs)	800kg (1760 Lbs)	800kg (1760 Lbs)
Recommended Maximum Thrust	2000kg (4400 Lbs)	2000kg (4400 Lbs)	2000kg (4400 Lbs)

Parts List

Hammer Type	Dominator 800				
Shank	Halco	A63-15 / SD8	DHD 380	SK25	RK64
Model Number	600310	600308	600309	Contents	
Item	Description	Part Number			Quantities
1	Thread Protector	207295	207295	207295	- 1
2	Snap Ring	783034	783034	783034	2 2
3	N.R.V. Seat	602887	602887	602887	- 1
4	O'Ring	768150	768150	768150	2 2
5	N.R.V.	602285	602285	602285	- 1
6	N.R.V. Cover	603696	603696	603696	- 1
7	N.R.V. Spring	760108	760108	760108	2 1
8	Top-Adaptor	603607	603607	603607	- -
9	Spacer	603576	603576	603576	1 1
10	O'Ring	768103	768103	768103	2 2
11	O'Ring	768145	768145	768145	2 2
12	Cylinder	603687	603687	603687	- -
13	Piston	603754	603747	603755	- -
14	Snap Ring	783015	783015	783015	2 2
15	Spacer	-	-	602840	- 1
16	Containment Band	603549	768102	603549	2 2
17	Bit Ring	601677	601839	603043	- 1
18	Chuck Spacer	603576	603576	603576	1 1
19	Chuck	603685	603686	603495	- 1
20	End Cap	741034	741034	741027	- -
SK	Service Kit	SK25	SK51	SK25	
RK	Repair Kit	RK78	RK79	RK64	
	Foot Valve	601675	601828	601819	
	F/V Tool - Body	601820	601829	601820	
	F/V Tool - Pusher	601569	601569	601569	

Drill Bits

Part Number	Diameter mm	Inch	Face Design	Type	Buttons Qty	Over Weight Size (Kg)
Halco Mach 80 Shank						
650980	203	8	Convex	Domed	21 x 20mm	51.5
650938	216	8.1/2	Convex	Domed	21 x 20mm	53.0
650571	225	8.7/8	Convex	Domed	26 x 16mm	55.5
650746	254	10	Convex	Domed	21 x 20mm	65.0
653040	300	11.7/8	Flat	Domed	38 x 20mm	Y 83.3
650365	311	12.1/4	Convex	Domed	29 x 20mm	Y 83.0
650908	375	14.3/4	Flat	Domed	40 x 20mm	Y 121.0
Sandvik Mission A63-15/SD8 Shank						
650959	200	7.7/8	Concave	Domed	12x16mm/9x20mm/6x13mm	43.0
650375	203	8	Concave	Domed	10x20mm / 14x16mm	43.5
650693	216	8.1/2	Flat	Domed	10 x 20mm / 24 x 16mm	47.6
650705	222	8.3/4	Concave	Domed	24 x 20mm	46.5
650357	241	9.1/2	Concave	Domed	18 x 20mm	52.5
650606	254	10	Concave	Domed	11x16mm / 18 x 20mm	56.5
650037	254	10	Flat	Domed	28 x 20mm	58.3
653105	270	10.5/8	Concave	Domed	34 x 18mm	57.0
653104	280	11	Concave	Domed	34 x 18mm	Y 59
650039	300	11.7/8	Flat	Domed	29 x 20mm	Y 84.5
Ingersoll Rand Shank - DHD 380						
650977	200	7.7/8	Concave	Domed	31 x 16mm	51.5
650373	203	8	Concave	Domed	10 x 20mm / 14 x 16mm	51.5
650022	241	9.1/2	Concave	Domed	10 x 16 / 18 x 20mm	56.9
650389	254	10	Concave	Domed	18 x 20mm / 10x16mm	64.5
650898	300	11.7/8	Convex	Domed	34 x 20mm	Y 84.5
653041	311	12.1/4	Concave	Domed	42 x 20mm	Y 84.1

Halco Rock Tools
Quality Management System
is Certified to ISO9001: 2008
Certificate No: LRQ 0850659



West lane, Southowram, Halifax, HX3 9TW

Tel: + 44 (0) 1422 399900, Fax: + 44 (0) 1422 330186

Email: salesuk@halcorocktools.com • salesusa@halcorocktools.com • salesaus@halcorocktools.com

halcorocktools.com