

# 6"

## DOMINATOR 600

Top-adaptor with internal N.R.V. (Non-Return-Valve) replaceable air distributor.

Revised chamber volumes and cycle timing to optimize performance.

Simplified piston geometry for improved balance and location within the cylinder.

Halco Mach 60 shank reduces contact stresses and wear rates.



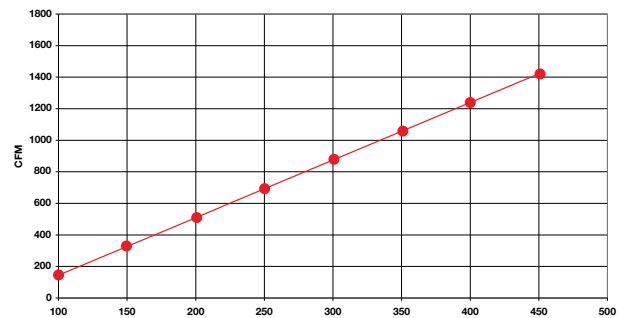
The Dominator 600 is a class leader in performance and is suitable for drilling at a wide range of air pressures, excelling at higher working pressures. Dominator 600 has a unique extended top-adaptor with retract carbides on Ingersoll-Rand and Mission versions for digging out of drilled bores.

Suitable for operation at air pressures of 100 - 435 psi (7 - 30 bar).

Drilling diameters of 152 - 245mm (6 - 9 5/8").

### Air Consumption

Dominator 600 Air Consumption

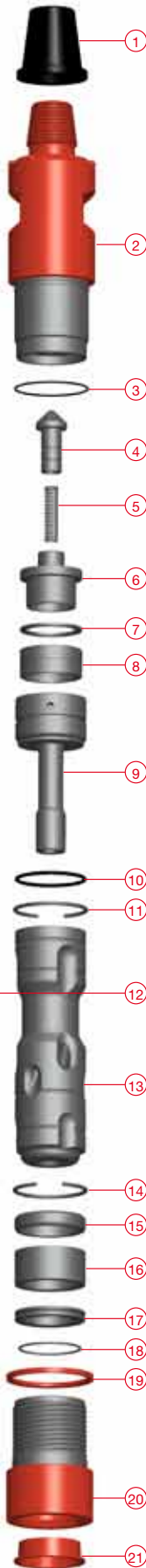


### Available Shanks

Halco Mach 60 shank

IR DHD 360

Sandvik Mission A53-25



## Hammer Overview

Hammer Type	Dominator 600	Dominator 600	Dominator 600
Part Number	600151	600094	600152
Shank	Halco	Ingersoll Rand	Sandvik Mission
	Mach 60	DHD 360	A53-25
Top Thread	3.1/2" Api Reg Pin	3.1/2" Api Reg Pin	3.1/2" Api Reg Pin
Flat Hammer Size	90mm (3.544")	101mm (3.977")	101mm (3.977")
Weight	89 Kg	89 Kg	89 Kg
Outside Diameter	139mm (5.472")	139mm (5.472")	139mm (5.472")
Make Up Length	1208mm (47.559")	1208mm (47.559")	1208mm (47.559")
Recommended Minimum Thrust	500 Kg (1100 Lbs)	500 Kg (1100 Lbs)	500 Kg (1100 Lbs)
Recommended Maximum Thrust	1500 Kg (3300 Lbs)	1500 Kg (3300 Lbs)	1500 Kg (3300 Lbs)

## Parts List

Hammer Type	Dominator 600	Dominator 600	Dominator 600		
Shank	Halco	IR DHD 360	A53-25	SK06	RK08
Model Number	600151	600094	600152	Contents	
Item	Description	Part Number			Quantities
1	Thread Protector	201701	201701	201701	-
2	Top-Adaptor	601935	602240	602240	-
3	O'Ring	768140	768140	768140	2
4	Non Return Valve	601560	601560	601560	-
5	N.R.V. Spring	760079	760079	760079	2
6	N.R.V. Housing	601940	601940	601940	-
7	Shim - 4mm	601946	601946	601946	-
	Shim - 5mm	601947	601947	601947	-
	Shim - 6mm	601948	601948	601948	-
	Shim - 7mm	601949	601949	601949	-
8	Compression Spring	760096	760096	760096	-
9	Air Distributor	601979	601979	601979	-
10	O'Ring	768055	768055	768055	2
11	Snap Ring	783017	783017	783017	2
12	Cylinder	601937	601937	601937	-
13	Piston	602600	602819	602600	-
14	Snap Ring	783017	783017	783017	2
15	Bottom Spacer	601943	747105	601943	-
16	Bit Guide Bush	-	602239	601992	-
17	Bit Retaining Ring	601941	602504	601994	-
18	O'Ring	747105	747105	747105	2
19	Chuck Spacer	601942	601942	601942	1
20	Chuck	601936	601936	602004	1
21	Cap	741009	741009	741009	-
SK	Service Kit	SK05	SK21	SK06	
RK	Repair Kit	RK07	RK35	RK08	
	Foot Valve	601570	601595	601570	
	F/V Tool - Body	601568	601878	601568	
	F/V Tool - Pusher	601569	601569	601569	

## Drill Bits

Part Number	Diameter mm	Inch	Face Design	Type	Button Qty	Over Size	Weight (Kg)
<b>Sandvik Mission A53-15 / SD6</b>							
650550	151	6	Concave	Domed	16 x 16mm		26
650790	165	6.1/2	Concave	Domed	18 x 16mm		27.5
650940	165	6.1/2	Convex	Domed	19 x 16mm		27.5
650701	171	6.3/4	Concave	Domed	24 x 16mm		26.2
650695	178	7	Flat	Domed	20 x 16mm	Y	29
650008	191	7.1/2	Concave	Domed	24 x 16mm	Y	30
650336	203	8	Convex	Domed	20 x 16mm	Y	36
650065	216	8.1/2	Concave	Domed	22 x 20mm	Y	36
<b>Ingersoll Rand (DHD360) / Atlas Copco Cop64</b>							
650783	152	6	Convex	Domed	20 x 16mm		25
650793	152	6	Concave	Domed	17 x 16mm		25
650789	165	6.1/2	Concave	Domed	18 x 16mm		25.5
650795	165	6.1/2	Convex	Domed	20 x 16mm		26
650605	165	6.1/2	Flat	Domed	12 x 16mm / 8 x 16mm Long		25.8
650897	165	6.1/2	Flat	Domed	8 x 20mm / 9 x 16mm Long		26.2
650016	165	6.1/2	Flat	Domed/Wear	12 x 16mm / 8 x 16mm L/8 x 13mm W		26.7
653134	165	6.1/2	Convex	Domed	16 x 16mm / 12 x 16mm Long		25
650982	170	6.3/4	Convex	Domed	6 x 16mm / 13 x 18mm		26.5
653038	170	6.3/4	Concave	Domed	18 x 16mm		26.5
653097	180	7	Concave	Domed	18 x 16mm	Y	27.3
650686	180	7	Concave	Domed/S-Ball	8 x 16mm D/10 x 16mm S-B	Y	27.3
653098	190	7.1/2	Concave	Domed	24 x 16mm	Y	30
653023	200	7.7/8	Convex	Domed	21 x 16mm	Y	34.5
650673	203	8	Concave	Domed	31 x 16mm	Y	35.2
650335	203	8	Convex	Domed	20 x 16mm	Y	35
650684	220	8.5/8	Concave	Domed	22 x 20mm	Y	40
650696	241	9.1/2	Flat	Domed	18 x 16mm / 10 x 20mm	Y	50
<b>Halco Mach 60 Shank</b>							
650585	152	6	Convex	Domed	16 X 16mm		23.5
650939	165	6.1/2	Convex	Domed	19 X 16mm		26
650927	170	6.3/4	Flat	Domed	19 X 16mm		26
650474	178	7	Convex	Domed	18 X 16mm	Y	30
650354	191	7.1/2	Convex	Domed	21 X 16mm	Y	32.5
650440	200	7.7/8	Convex	Domed	20 X 16mm	Y	34
650681	203	8	Concave	Domed	31 X 16mm	Y	35
650441	225	8.7/8	Convex	Domed	26 X 16mm	Y	42
650457	245	9.5/8	Convex	Domed	27 X 16mm	Y	49

Halco Rock Tools  
Quality Management System  
is Certified to ISO9001: 2008  
Certificate No: LRQ 0850659



West lane, Southowram, Halifax, HX3 9TW

Tel: + 44 (0) 1422 399900, Fax: + 44 (0) 1422 330186

Email: salesuk@halcorocktools.com • salesusa@halcorocktools.com • salesaus@halcorocktools.com

halcorocktools.com