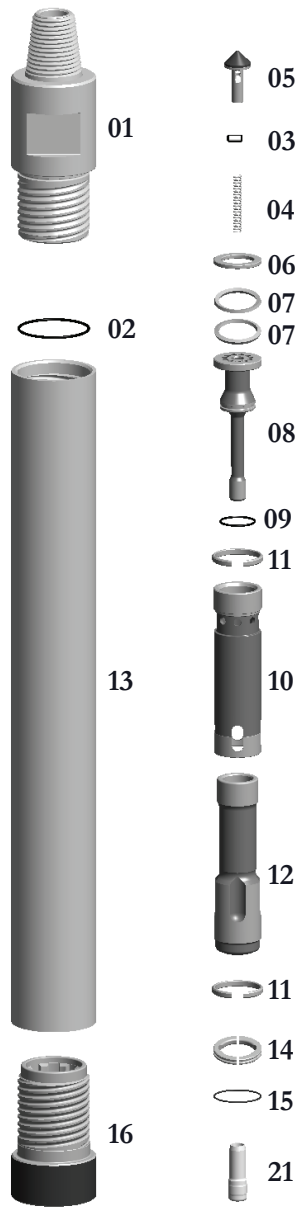


T4-STD-Hammer

TAKES 340 SHANKS

Thread Change/Pin
Box Thread
Carbide Buttons
Special Flats

**SPECIAL BACKHEAD FEATURES—CALL OFFICE



Replacement Parts

Hmr Part #	Description	Order #	Weight (lbs.)
T4-01	Backhead 2-7/8" API REG PIN w/O-Ring	ET4-01	19.0
T4-01	Backhead 2-3/8" API REG PIN w/O-Ring	ET4-01A	19.0
T4-02	**Replacement O-Ring for Backhead**	EBB5-09	0.1
T4-03(S)	Choke Set	ET4-03(S)	0.3
T4-03	Blank Choke	ET4-03	0.1
T4-03A	1/8" Choke	ET4-03A	0.1
T4-03B	3/16" Choke	ET4-03B	0.1
T4-04	Check Valve Dart Spring	E5-08	0.3
T4-05	Check Valve Dart	ET4-05	1.5
T4-06	Spacer	ET4-06	0.4
T4-07	Disc Spring (requires 2)	ET4-07	0.3/ea
T4-08	Air Distributor w/O-Ring	ET4-08	4.0
T4-09	**Replacement O-Ring for Air Distributor**	ET4-09	0.1
T4-10	Cylinder w/Retainer Ring	ET4-10	6.0
T4-11	**Replacement Retainer Ring for Cylinder**	ET4-11	0.2
T4-12	Piston	ET4-12	15.0
T4-13	Wear Sleeve w/Retainer Ring	ET4-13	33.0
T4-11	**Replacement Retainer Ring for Wear Sleeve**	ET4-11	0.2
T4-14	Bit Retainer Ring w/O-Ring	ET4-14	0.4
T4-15	**Replacement O-Ring for Bit Retainer Ring**	ET4-15	0.1
T4-16	Chuck	ET4-16	8.0
T4-16-DM	Chuck - Ductile	ET4-16-DM	8.0
T4-21	Foot Valve	E340A-25	0.5

	Outside Diameter		Hammer Length Pin		Hammer Length Box		Bit Size Range		
	IN.	MM.	IN.	MM.	IN.	MM.	IN.	MM.	
T4	3-7/8	98.43	36-5/8	930.28	40-7/8	1038.23	4-1/4-5-1/4	108-134	
Choke Size	200 PSI	13.8 BARS	250 PSI	17.2 BARS	300 PSI	20.7 BARS	350 PSI	24.1 BARS	
Blank	Blank	500	14.16	660	18.69	800	22.65	925	26.19
1/8	3.18	527	14.92	700	19.82	848	24.01	975	27.60
3/16	4.76	555	15.71	748	21.18	906	25.65	1047	29.64

The above air charts are based upon ideal conditions, your results may vary.