



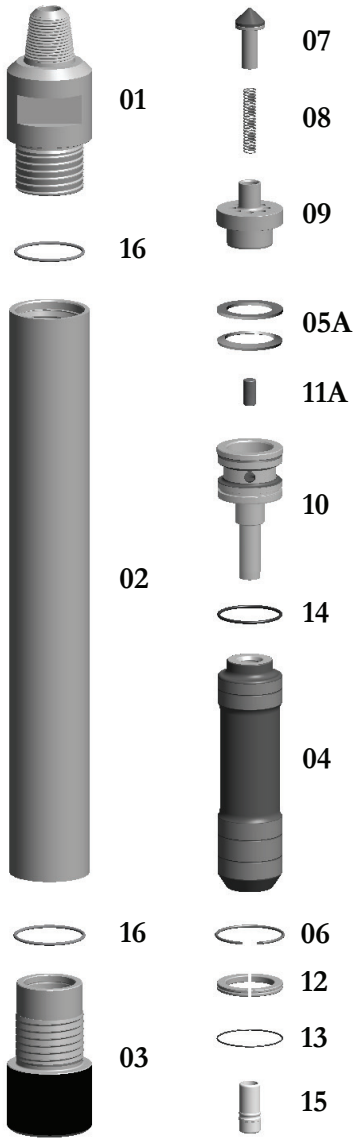
**Drill 6: E6-STD-Hammer-TS** w/3-1/2" API Reg Pin Wt. 225 lbs.

**Drill 6: E6-HD-Hammer-TS** w/3-1/2" API Reg Pin Wt. 270 lbs.

**TAKES SD6 SHANKS**

Thread Change/Pin  
Box Thread  
Carbide Buttons  
Special Flats

\*\*SPECIAL BACKHEAD FEATURES—CALL OFFICE



Replacement Parts			
Hmr Part #	Description	Order #	Weight (lbs.)
6-01	Top Sub 3-1/2" API REG PIN w/ O-Ring	<b>E6-01</b>	45.0
6-01HD	Top Sub w/O-Ring HEAVY DUTY	<b>E6-01HD</b>	48.0
6-16	**Replacement O-Ring for Top Sub**	<b>E6-16</b>	0.1
6-02	Piston Case w/Retainer Ring	<b>E6-02</b>	95.0
6-02HD	Piston Case w/Retainer Ring HEAVY DUTY	<b>E6-02HD</b>	114.0
6-06	**Replacement Retainer Ring for Piston Case**	<b>E6-06</b>	0.2
6-03	Driver Sub w/O-Ring	<b>E6-03</b>	24.0
6-03HD	Driver Sub HEAVY DUTY w/O-Ring	<b>E6-03HD</b>	26.0
6-16	**Replacement O-Ring for Driver Sub**	<b>E6-16</b>	0.1
6-04	Piston	<b>E6-04</b>	52.0
6-05A	Disc Spring & Spacer Set	<b>E6-05A</b>	1.0
6-07	Check Valve Dart	<b>E6-07</b>	1.5
6-08	Check Valve Dart Spring	<b>E6-08</b>	0.3
6-09	Check Valve Guide	<b>E6-09</b>	5.0
6-10	Rigid Valve with O-Ring	<b>E6-10</b>	11.0
6-14	**Replacement O-Ring for Rigid Valve	<b>E6-14</b>	0.2
6-11	Choke Set	<b>E6-11(5)</b>	1.5
6-11A	Blank Choke	<b>E6-11A</b>	0.3
6-11B	1/8" Choke	<b>E6-11B</b>	0.3
6-11C	3/16" Choke	<b>E6-11C</b>	0.3
6-11D	1/4" Choke	<b>E6-11D</b>	0.3
6-11E	5/16" Choke	<b>E6-11E</b>	0.3
6-12	Bit Retainer Ring w/ O-Ring	<b>E6-12</b>	1.6
6-13	**Replacement O-Ring for Bit Retainer**	<b>E6-13</b>	0.1
6-15	Foot Valve	<b>E6-15</b>	0.8
6-17	Brass Break-Out Ring (Optional)	<b>E6-17</b>	0.1

	Outside Diameter		Hammer Length Pin				Hammer Length Box		Bit Size Range		
	IN.	MM.	IN.	MM.	IN.	MM.	IN.	MM.			
Drill 6	5-7/16	141.1	49-9/32	1251.7	53-1/32	1347	6-10	153-254			
Drill 6 HD	5-3/4	146.0	49-9/32	1251.7	53-1/32	1347	6-1/2-10	165-254			
Choke Size	150 PSI	10.3 BARS	200 PSI	13.8 BARS	250 PSI	17.2 BARS	300 PSI	20.7 BARS	350 PSI	24.1 BARS	
IN.	MM.										
Blank	Blank	410	11.61	565	16.00	725	20.53	885	25.06	1050	29.74
1/8	3.18	435	12.32	595	16.85	765	21.66	935	26.48	1110	31.44
3/16	4.76	465	13.17	630	17.84	815	23.08	990	28.04	1175	33.28
1/4	6.35	490	13.88	660	18.69	870	24.64	1060	30.02	1260	35.68
5/16	7.94	560	15.86	755	21.38	960	27.19	1160	32.85	1370	38.80
3/8 -None	9.53	610	17.28	830	23.51	1050	29.74	1265	35.82	1480	41.91

The above air charts are based upon ideal conditions, your results may vary.