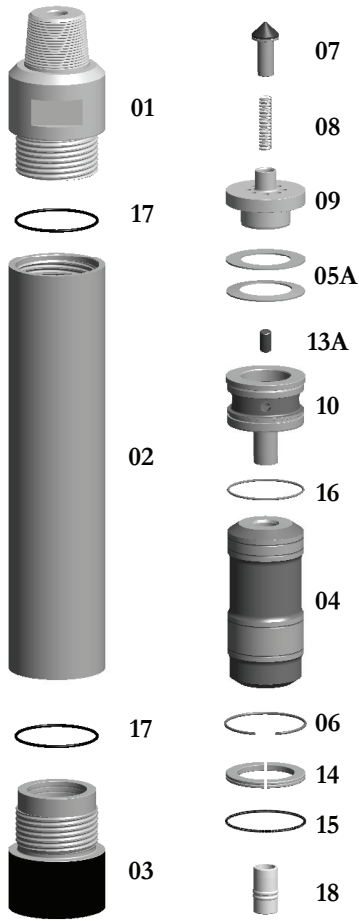


E10-STD-Hammer
TAKES SD10 SHANKS

**SPECIAL BACKHEAD FEATURES—CALL OFFICE


Replacement Parts

| Hmr Part # | Description | Order # | Weight (lbs.) |
|------------|---|------------------|---------------|
| 10-01 | Top Sub 6-5/8" API REG PIN w/O'Ring | E10-01 | 158.0 |
| 10-17 | **Replacement O-Ring for Top Sub** | E10-17 | 1.0 |
| 10-2 | Piston Case w/Retainer Ring | E10-02 | 240.0 |
| 10-06 | **Replacement Retainer Ring for Piston Case** | E10-06 | 0.7 |
| 10-03 | Driver Sub w/O-Ring | E10-03 | 93.0 |
| 10-17 | **Replacement O-Ring for Driver Sub** | E10-17 | 1.0 |
| 10-04 | Piston | E10-04 | 140.0 |
| 10-05A | Disc Spring & Spacer Set | E10-05A | 1.5 |
| 10-07 | Check Valve Dart | E8-07 | 1.5 |
| 10-08 | Check Valve Dart Spring | E8-08 | 0.3 |
| 10-09 | Check Valve Guide | E10-09 | 21.0 |
| 10-10 | Rigid Valve w/O-Ring | E10-10 | 35.0 |
| 10-16 | **Replacement O-Ring for Rigid Valve** | E10-16 | 1.0 |
| 10-13 | Choke Set | E12-11(4) | 1.5 |
| 10-13A | Blank Choke | E12-11A | 0.3 |
| 10-13B | 1/8" Choke | E12-11B | 0.3 |
| 10-13C | 1/4" Choke | E12-11C | 0.3 |
| 10-13D | 3/8" Choke | E12-11D | 0.3 |
| 10-14 | Bit Retainer Ring w/O-Ring | E10-14 | 3.0 |
| 10-15 | **Replacement O-Ring for Bit Retainer** | E10-15 | 0.2 |
| 10-18 | Foot Valve | E10-18 | 1.2 |
| 10-19 | Brass Break-Out Ring (Optional) | E10-19 | 0.1 |

| | Outside Diameter | | Hammer Length Pin | | | | Bit Size Range | |
|------------|------------------|----------|-------------------|-----------|--------------|-----------|----------------|-----------|
| | IN. | MM. | IN. | MM. | IN. | MM. | | |
| Drill 10 | 8-7/8 | 226 | 49-7/8 | 1266.8 | 9-7/8-12-1/2 | 251-318 | | |
| Choke Size | 100 PSI | 6.9 BARS | 150 PSI | 10.3 BARS | 200 PSI | 13.8 BARS | 250 PSI | 17.2 BARS |
| IN. MM. | PSI | BARS | PSI | BARS | PSI | BARS | PSI | BARS |
| Blank | 400 | 11.33 | 660 | 18.69 | 950 | 26.90 | 1235 | 34.98 |
| 1/8 | 420 | 11.90 | 685 | 19.40 | 985 | 27.90 | 1270 | 35.97 |
| 1/4 | 470 | 13.31 | 750 | 21.24 | 1025 | 24.03 | 1325 | 37.52 |
| 3/8 | 575 | 16.28 | 860 | 24.36 | 1150 | 32.57 | 1485 | 42.06 |
| 1/2 | 750 | 21.24 | 1080 | 30.59 | 1395 | 39.51 | 1690 | 47.86 |

The above air charts are based upon ideal conditions, your results may vary.