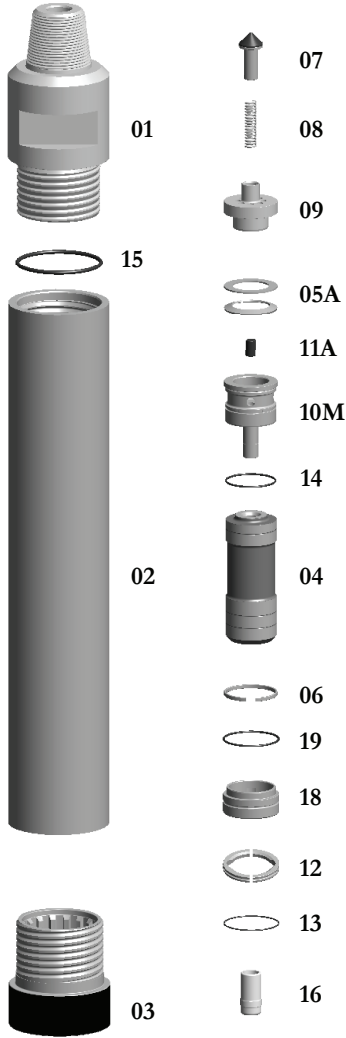


BB8-STD Hammer

TAKES QL8 SHANKS

Thread Change/Pin
Box Thread
Carbide Buttons
Side Carbide Buttons
Special Flats

**SPECIAL BACKHEAD FEATURES—CALL OFFICE



Replacement Parts

Hmr Part #	Description	Order #	Weight (lbs.)
BB8-01	Top Sub 4-1/2" API REG PIN w/O-Ring	EBB8-01	93.0
BB8-15	**Replacement O-Ring for Top Sub**	E8-15	0.1
BB8-02	Piston Case w/Retainer Ring	EBB8-02	157.0
BB8-06	**Replacement Retainer Ring for Piston Case**	EBB8-06	0.4
BB8-03	Chuck	EBB8-03	24.0
BB8-04	Piston	EBB8-04	70.0
BB8-05A	Disc Spring / Spacer Ring Set	E8-05A	1.5
BB8-07	Check Valve Dart	E8-07	1.5
BB8-08	Check Valve Dart Spring	E8-08	0.3
BB8-09	Check Valve Guide	E8-09	12.0
BB8-10M	Rigid Valve w/ O-ring	E8-10M	15.0
BB8-14	**Replacement O-Ring for Rigid Valve**	E8-14	0.1
BB8-11(5)	Choke Set	E8-11(5)	1.5
BB8-11A	Blank Choke	E8-11A	0.3
BB8-11B	1/8" Choke	E8-11B	0.3
BB8-11C	1/4" Choke	E8-11C	0.3
BB8-11D	3/8" Choke	E8-11D	0.3
BB8-11E	7/16" Choke	E8-11E	0.3
BB8-12	Bit Retainer Ring w/O-Ring	EBB8-12	2.0
BB8-13	**Replacement O-Ring for Bit Retainer Ring**	ET8-13	0.2
BB8-16	Foot Valve	EQL80-24	0.2
BB8-17	Brass Break Out Ring - Bottom (Optional)	ET8-17	0.2
BB8-17A	Brass Break Out Ring - Top (Optional)	E8-17	0.2
BB8-18	Bearing w/O-Ring	EBB8-18	7.0
BB8-19	**Replacement O-Ring for Bearing**	E8-14	0.1

		Outside Diameter		Hammer Length Pin		Hammer Length Box		Bit Size Range	
		IN.	MM.	IN.	MM.	IN.	MM.	IN.	MM.
BB8		7-1/8	180.34	48-1/16	1120.8	51-3/4	1314.45	7-7/8-12	200-305
Choke Size		200 PSI	13.8 BARS	250 PSI	17.2 BARS	300 PSI	20.7 BARS	350 PSI	24.1 BARS
IN.	MM.								
Blank	Blank	630	17.84	780	22.08	950	26.90	1075	30.44
1/8	3.18	660	18.69	823	23.30	1000	28.31	1140	32.28
1/4	6.35	722	20.44	930	26.33	1126	31.88	1275	36.10
3/8	9.53	887	25.11	1105	31.29	1329	37.63	1507	42.67
7/16	11.11	991	28.06	1235	34.97	1472	41.68	1671	47.31
1/2 None	12.70	1102	31.20	1345	38.08	1614	45.70	1851	52.41

The above air charts are based upon ideal conditions, your results may vary.