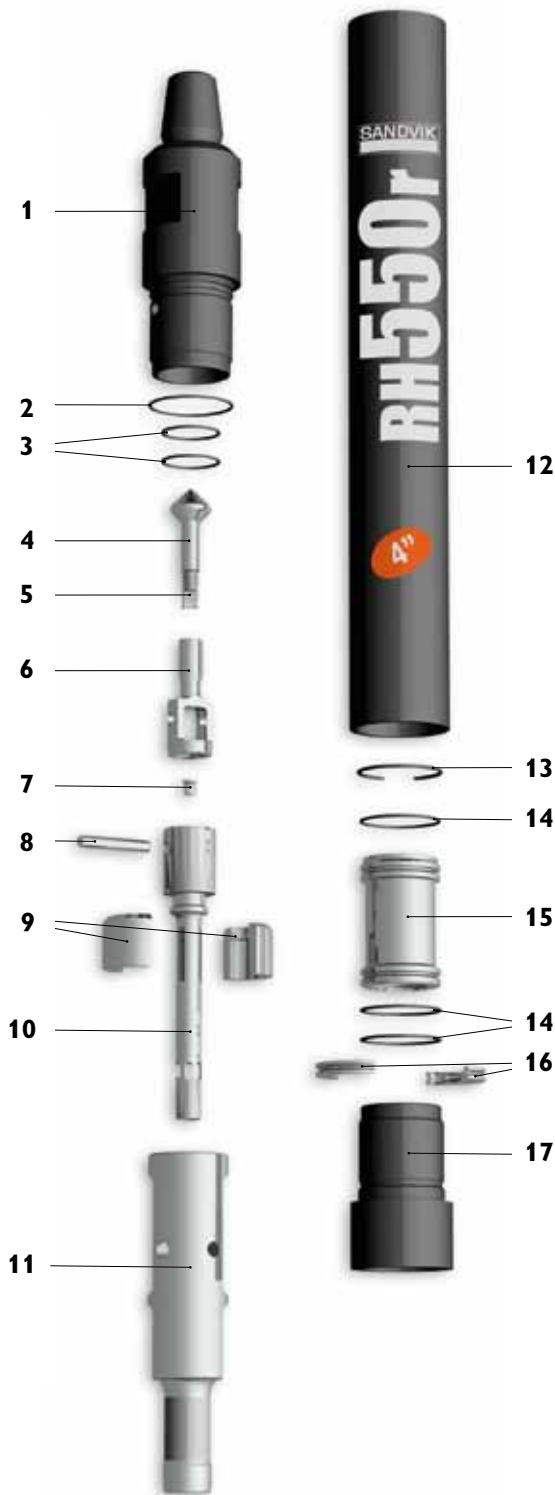


Sandvik DTH drilling tools

RH550r hammer

4''



| Replacement parts | Item description | | Weight | | Part No. |
|------------------------|---|----------------------|--------|-------|-----------------|
| | kg | lb | kg | lb | |
| 1. | Top Subs with 3 O-Rings | | | | |
| 2 | 3/8" | API Reg. Pin | 10 | 22 | 33-48001-1/16A |
| 2 | 7/8" | API Reg. Pin | 10 | 22 | 33-48001-1/11A |
| | #24 | Cubex. pin | 10 | 22 | 33-48001-1/77A |
| 2. | O-Ring Top Sub OD (1) | | | | In seal kit |
| 3. | O-Ring Top Sub ID (2) | | | | In seal kit |
| 4. | Check Valve Dart (with spring) | | 0,3 | 0,66 | 25-99001A |
| 5. | Check Valve Spring | | 0,02 | 0,04 | 22-99071 |
| 6. | Check Valve Guide | | 0,2 | 0,44 | 39-48001-1 |
| 7. | Choke Set, Blank 1/8", 3/16", & 1/4" | | 0,1 | 0,22 | 29-48017A |
| 8. | Feed Tube Retainer Pin | | 0,03 | 0,07 | 12-99014 |
| 9. | Tuning Ring for low volume (optional) | | 0,23 | 0,51 | 56-48552 |
| 10. | Feed Tube With Retainer Pin and Blank Choke | | 0,7 | 1,54 | 37-48001-1A |
| 11. | Piston | | 7 | 15,40 | 36-48J81 |
| 12. | Piston Case with Retainer Ring | | 15 | 33,00 | 35-48014A |
| 13. | Piston Retainer Ring | | 0,05 | 0,11 | 23-99029 |
| 14. | O-Rings Guide Sleeve & Bit Ret. (3) | | | | In seal kit |
| 15. | Guide Sleeve with 2 O-Rings (Item 14) | | 1,8 | 3,96 | 26-48J10A |
| 16. | Bit Retainer Ring w/O-Ring (Item 14) | | 0,23 | 0,51 | 27-48006A |
| 17. | Driver Sub | | 3,2 | 7,04 | 34-48006 |
| Seal Kit | | | | | |
| 1 | piece of 2, 2 of 3 & 7 of 14 | | 0,25 | 0,5 | 38-48056-1 |
| Rebuild Kit | | | | | |
| 1 | piece of 1, 1 of 12, 1 of 17 & Seal Kit | | | | |
| 2 | 3/8" | API Reg. Pin | 28 | 62 | 38-48001/16 |
| 2 | 7/8" | API Reg. Pin | 28 | 62 | 38-48001/11 |
| | #24 | Cubex. pin | 28 | 62 | 38-48001/77 |
| Complete Hammer | | | | | |
| 2 | 3/8" | API Reg. Pin top sub | | | 32-5540-RMA/16S |
| 2 | 7/8" | API Reg. Pin top sub | | | 32-5540-RMA/11S |
| | #24 | Cubex. pin top sub | | | 32-5540-RMA/77S |
| Bit shank | | | | | |
| M40 | | | | | |



| Weight | | Outside diameter | | Hammer length | | Hammer length with bit | | | |
|----------------------|---------|------------------|--------|-------------------------|--------|------------------------|------|--------------|------|
| kg | lb | mm | inch | mm | inch | Bit closed | | Bit extended | |
| | | | | | | mm | inch | mm | inch |
| 38 | 83 | 98 | 3,56 | 914 | 36 | 989 | 38,9 | 1029 | 40,5 |
| Air consumption, cfm | | | | Air consumption, m3/min | | | | | |
| 150 psi | 250 psi | 350 psi | 10 bar | 18 bar | 24 bar | | | | |
| 180 | 370 | 560 | 5,1 | 10,5 | 15,9 | | | | |
| Low Volume Option | 151 | 315 | 466 | 4,3 | 8,9 | | | | |