

8"

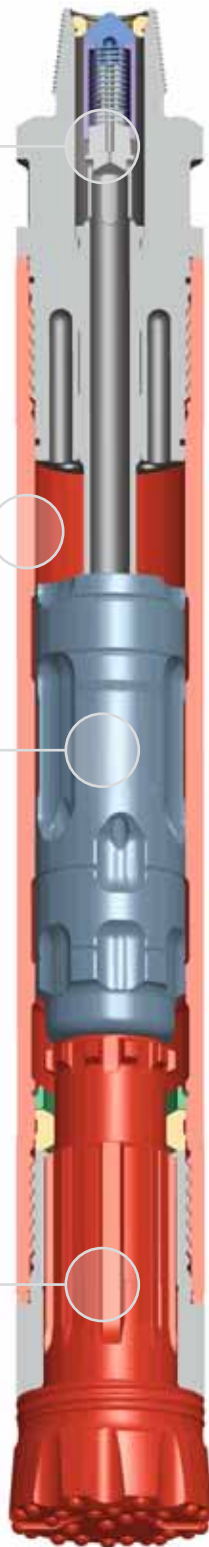
DOMINATOR 880 DW

One piece top-adaptor reduces internal parts. No make up required. External N.R.V. for easy maintenance.

Revised chamber volumes and cycle timing to optimize performance.

Simplified piston geometry for improved balance and location within the cylinder.

IR DHD 380 shank reduces contact stresses and wear rates.

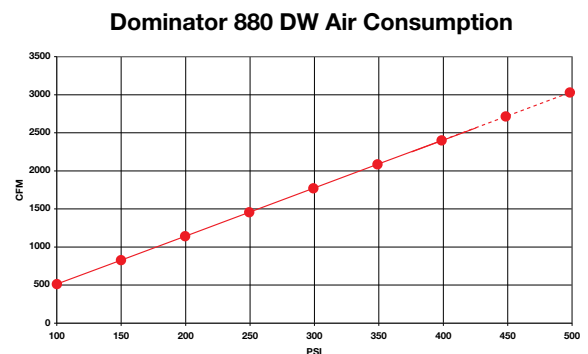


The Dominator 880 Deep-Well hammer has been specifically designed for drilling deep holes under a head of water. The one piece top-adaptor with N.R.V. (Non-Return-Valve) makes it easy to maintain and service the hammer. The wide body diameter of the Dominator 880 DW allows for an increased piston weight and therefore an improved performance. A variable choke for increased air volume can be fitted to the Dominator 880 DW to suit compressor volume outputs.

Suitable for operation at air pressures of 100 - 435 psi (7 - 30 bar).

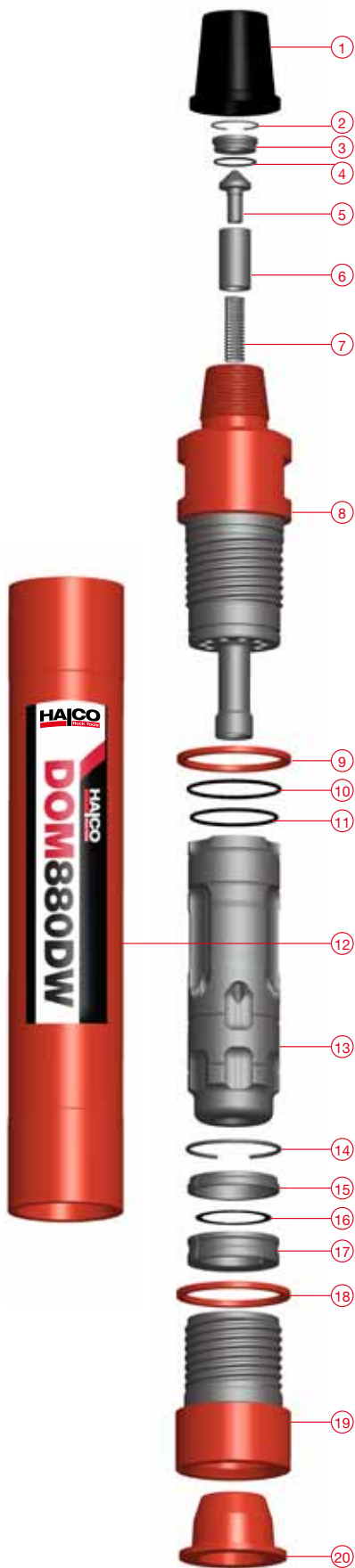
Drilling diameters of 200 - 311 mm (7 7/8 - 12 1/4").

Air Consumption



Available Shanks

IR DHD 380



Hammer Overview

Hammer Type	Dominator 880DW
Part Number	600261
Shank	Ingersoll Rand
	DHD 380
Top Thread	4. 1/2" Api Reg Pin
Flat Hammer Size	156mm (6.142")
Weight	177 Kg
Outside Diameter	182mm (7.165")
Make Up Length	1263mm (49.724")
Recommended Minimum Thrust	800kg (1760 Lbs)
Recommended Maximum Thrust	2000kg (4400 Lbs)

Parts List

Hammer Type		Dominator 880DW		
Shank		DHD 380	SK25	RK64
Model Number		600261	Contents	
Item	Description	Part Number	Quantities	
1	Thread Protector	207295	-	-
2	Snap Ring	783034	2	2
3	N.R.V. Seat	602887	-	1
4	O'Ring	768150	2	2
5	Non Return Valve	602285	-	1
6	N.R.V. Cover	603696	-	1
7	N.R.V. Spring	760108	2	2
8	Top-Adaptor	603498	-	-
9	Spacer	603576	1	1
10	O'Ring	768103	2	2
11	O'Ring	768145	2	2
12	Cylinder	603496	-	-
13	Piston	602743	-	-
14	Snap Ring	783015	2	2
15	Spacer	602840	-	1
16	Containment Band	603549	-	-
17	Bit Ring	603043	-	1
18	Chuck Spacer	603576	1	1
19	Chuck	603495	-	1
20	End Cap	741027	-	-
SK	Service Kit	SK25		
RK	Repair Kit	RK64		
	Foot Valve	601819		
	F/V Tool - Body	601820		
	F/V Tool - Pusher	601569		

Drill Bits

Part Number	Diameter		Face Design	Type	Buttons Qty	Over Size	Weight (Kg)
	mm	Inch					
Ingersoll Rand Shank - DHD 380							
650977	200	7.7/8	Concave	Domed	31 x 16mm		£52.0
650373	203	8	Concave	Domed	10 x 20mm / 14 x 16mm		51.5
650022	241	9.1/2	Concave	Domed	10 x 16 / 18 x 20mm		56.9
650389	254	10	Concave	Domed	18 x 20mm / 10x16mm		64.5
650898	300	11.7/8	Convex	Domed	34 x 20mm	Y	84.5
653041	311	12.1/4	Concave	Domed	42 x 20mm	Y	84.1

Halco Rock Tools
Quality Management System
is Certified to ISO9001: 2008
Certificate No: LRQ 0850659



West lane, Southowram, Halifax, HX3 9TW

Tel: + 44 (0) 1422 399900, Fax: + 44 (0) 1422 330186

Email: salesuk@halcorocktools.com • salesusa@halcorocktools.com • salesaus@halcorocktools.com

halcorocktools.com